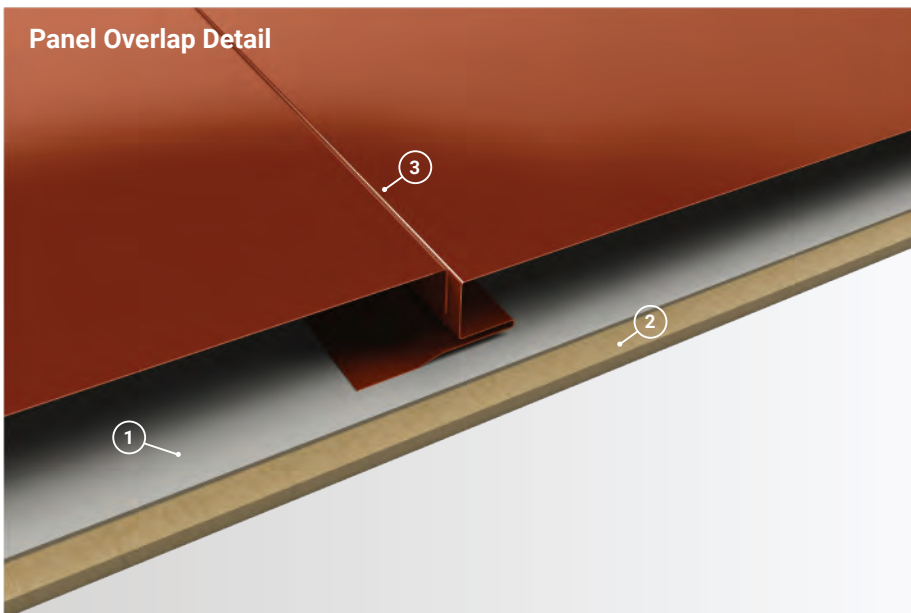


Panel Overlap Detail



1. **Underlayment:** Semi-Permeable Vapor Barrier
2. **Substrate:** Plywood substrate material shown
3. **Reveal Width:** No reveal shown, can be manufactured with up to 1" of reveal between panels in 1/4" increments.

Wall Coverage 12" - 16"

Reveal Widths Flush to 1"
1/4" Increments

Panel Gauges 22*, 24*

Fastener Options Concealed Fastener

Panel Length 4' to 30'+

Relief Height 7/8"

Variegated Assembly Available

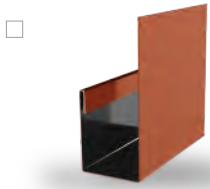
Stiffener Options None, Single V, Double V

Warranty Based on Paint System

For more information 1.833.STEEL.US

* Grade 50

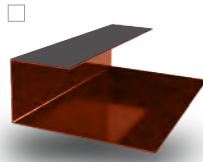
Version 5.2, 12/2021



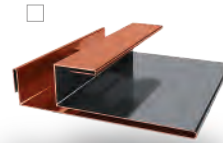
J Trim



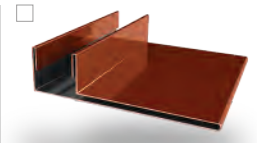
Double J Trim ***



Reverse J Trim *



F & J Trim



F Trim



Sidewall



Outside Corner



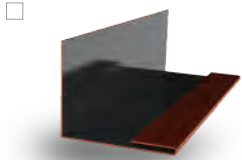
Outside Corner 2



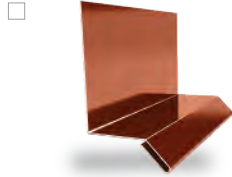
Inside Corner



Inside Corner 2



Inside Corner Closure



Base Trim



Double Base Trim ***



Broom Base



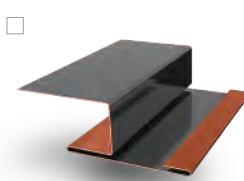
Wainscot



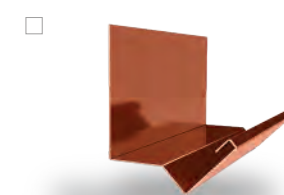
Fascia



Z Metal



H Trim **



Head Trim

Additional Trim Profiles Available By Request

* Used with Outside & Inside Corner 2 and H Trim

** Used with Reverse J Trim

*** Color On Both Sides

